

# DIAPHRAGM VACUUM PUMP

## LABOPORT® SD N 840.3 FT.40.18

DATA SHEET E 273



### Technical features

- 100 % oil-free transfer – thereby pure transferring, evacuation and compression of gases
- Integrated KNF self-drying system ensures that condensate is quickly removed from the pump heads without the vacuum being altered. This significantly reduces process time and preserves the pump heads.
- Chemically resistant and thus ideal for use with extremely aggressive/corrosive gases and vapors
- Maintenance-free
- Environmentally friendly
- Gastight, leakage rate approx.  $6 \times 10^{-3}$  mbar x l/s, not tested in serial production

### Technical data

Flow rate [m³/h] at atm. pressure	2.04
Flow rate [l/min] at atm. pressure	34
Ultimate vacuum [mbar abs.]	10
Operating pressure [bar g]	1
Voltage [V]	230
Frequencies [Hz]	50
Motor protection	IP 44
Power P <sub>1</sub> [W]	245
Operating current [A]	1.5
With thermal switch and power fuse	
Motors with other voltages and frequencies on request	

### MATERIALS

Pump head	PTFE
Diaphragm	PTFE-coated
Valves	FFPM

### OTHER DATA

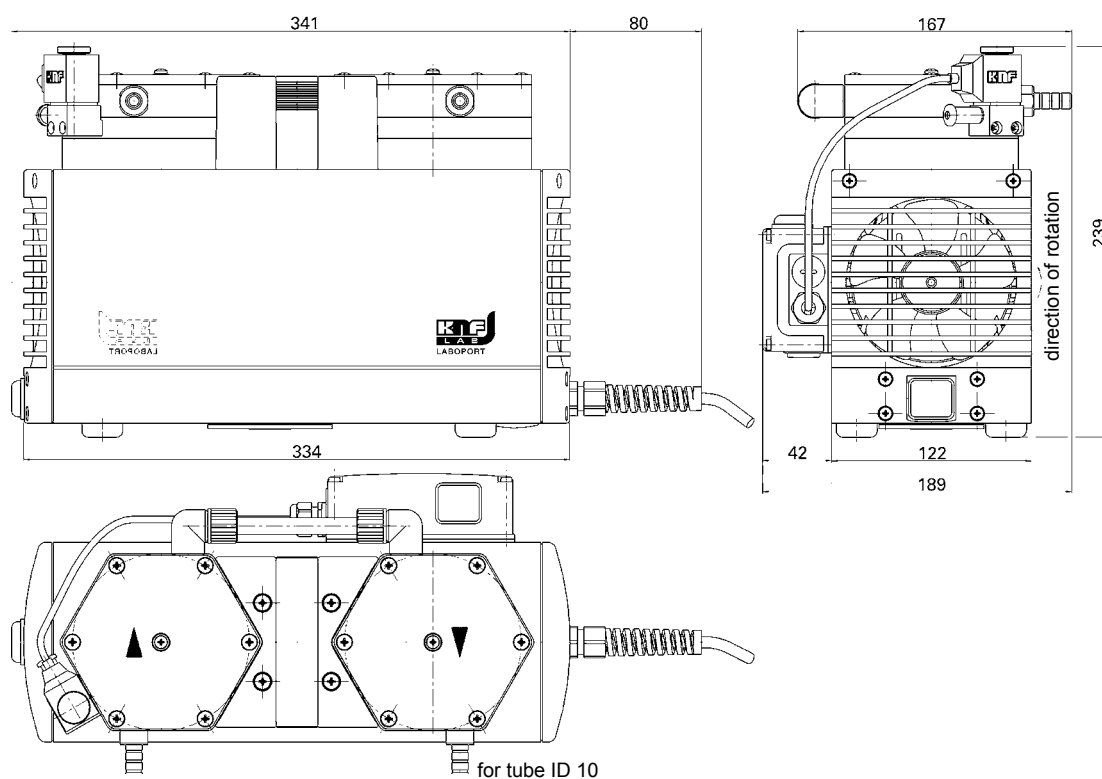
Weight [kg]	12.9
Hose connections	ID 10
Dimensions W x H x D [mm]	189 x 239 x 341
Permissible media and ambient temperature [°C]	+5 ... +40

### ACCESSORIES

	ID
Spares kit	057359

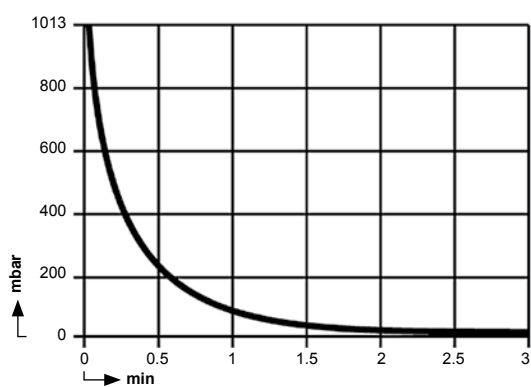
## Dimensions

N 840.3 FT.40.18



## Performance characteristics

PUMP DOWN TIME FOR 10 LITER VESSEL



FLOW CAPACITY

